

PART OF THE S.E. 1/4, SEC. 34, T.6N., R.1W., S.L.B. & M.
AMENDED PLAT OF LOT 27

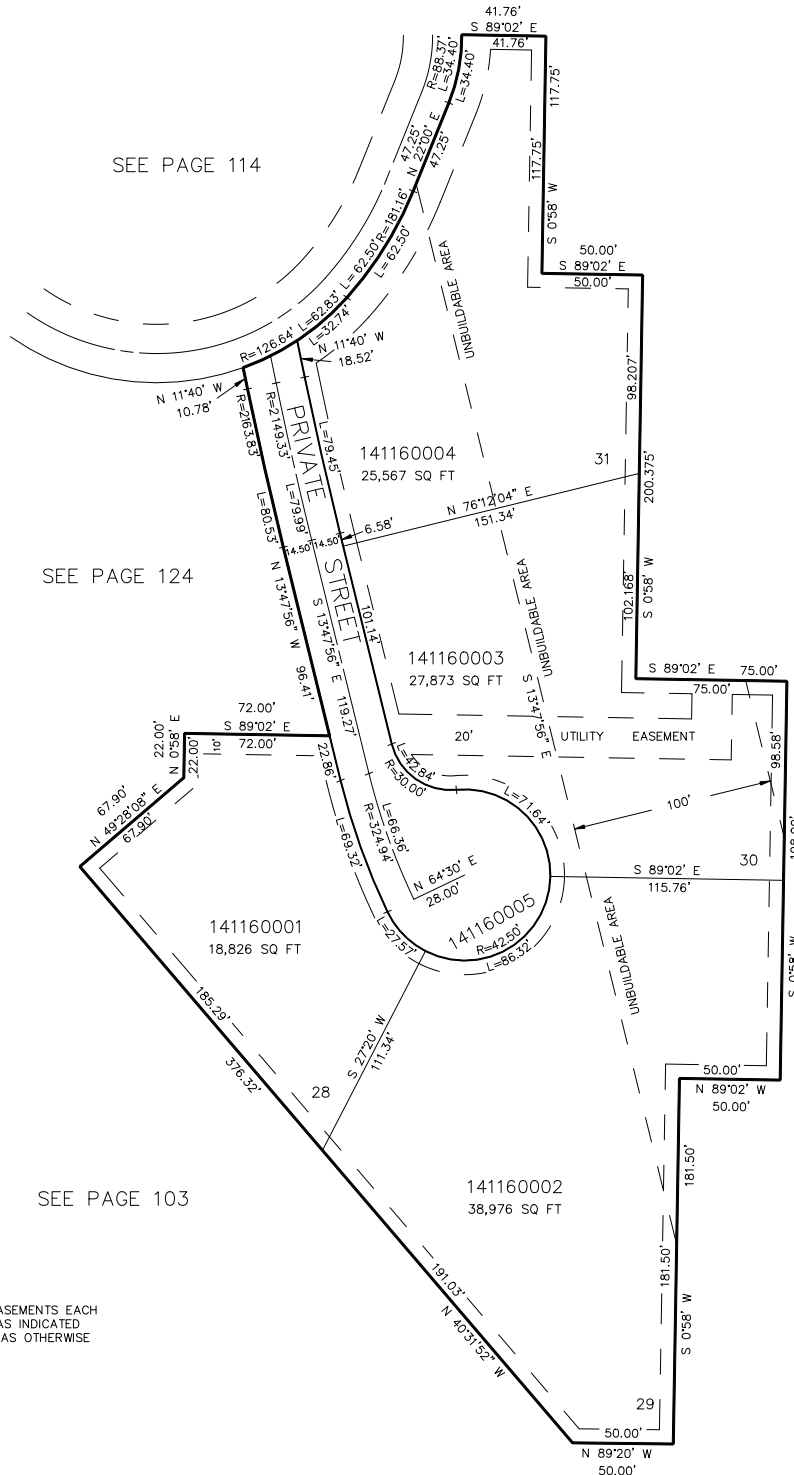
116

EAST BENCH AT 29th
A PLANNED RESIDENTIAL UNIT DEVELOPMENT

TAXING UNIT: 183

IN OGDEN CITY

SCALE 1" = 50'



FOR COMPLETE ENG DATA SEE
ORIGINAL DEDICATION PLAT IN
BOOK 34, PAGE 88 OF RECORDS.